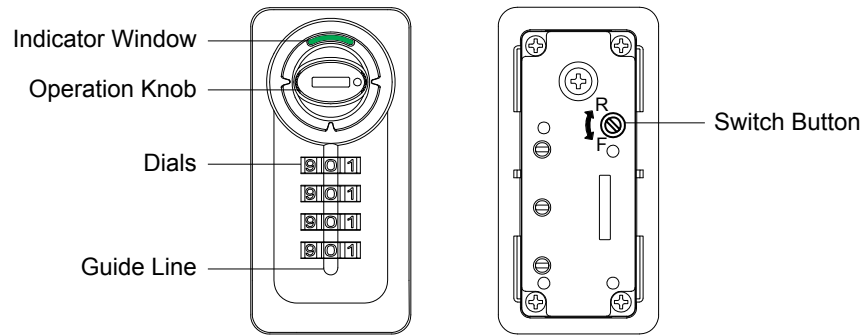
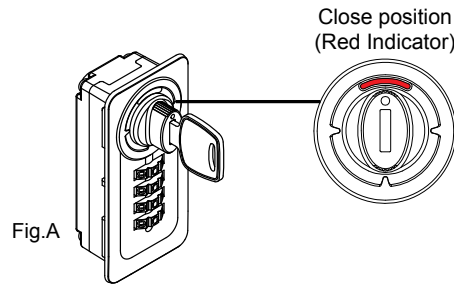


How to decode the forgot combination ?

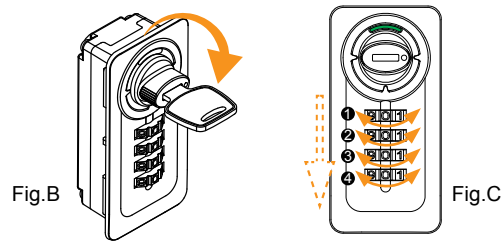


- Master Key operation may be used at any time to open a lock in an emergency.

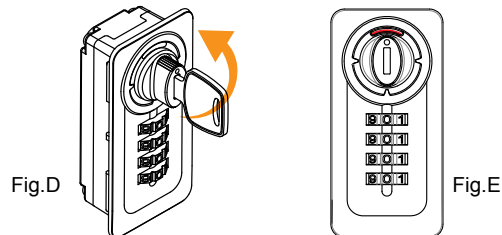
1. Insert the Master Key when the Knob is in Close position. (Fig.A)



2. Turn the Master Key clockwise 90 degree. (Fig. B)
Gently rotate each dial from up (1) to down (4) until it stops. (Fig. C)



3. Turn the Master Key counterclockwise 90 degree (Fig. D) and withdraw the key. You can now keep using the retrieved combinations or reset your new desired codes. (Fig. E)



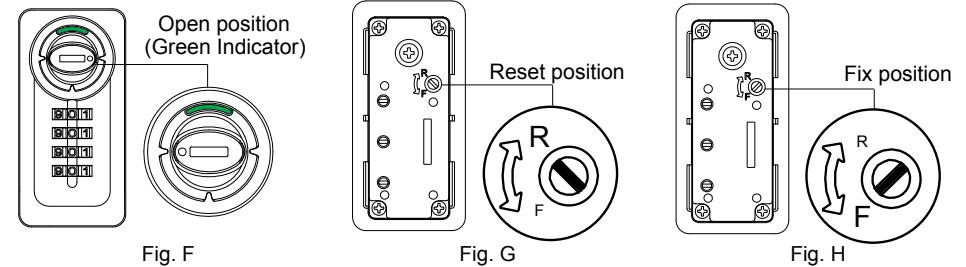
How to reset your combination?

- To reset your new combination, there are 2 modes of operation, fixed combination or open-reset combination.
- The factory preset combination is 0-0-0-0.

FIXED VERSION

In fixed combination mode, the lock is continually opened and closed with the same custom combination that was set.

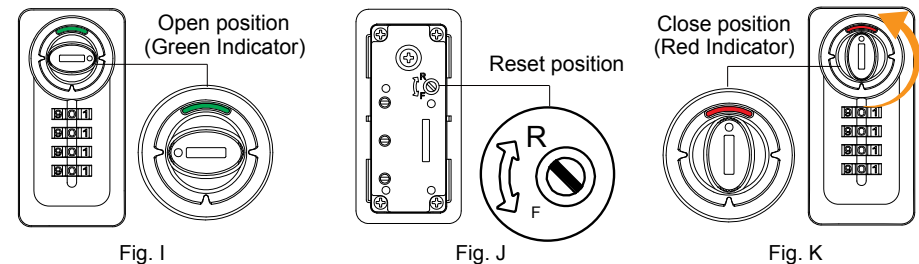
1. Turn the Operation Knob clockwise 90 degree to the open position. The Indicator in the window will turn to green. (Fig. F)
2. Turn the Switch Button on the back of the lock to the "R" position. (Fig. G)
3. Set your own desired combination .
4. Return the Switch Button back to "F" position. Now, the lock is set to continuously open using the desired fixed combination. (Fig. H)



OPEN-RESET VERSION

In the open-reset combination mode, the combination may be changed after each time the lock is opened.

1. Turn the Operation Knob clockwise 90 degree to the open position. The Indicator in the window will turn to green. (Fig. I)
2. Turn the Switch Button on the back of the lock to the "R" position. Leave the button in "R" position. (Fig. J)
3. Now, the combination can be resettable before turning the Operation Knob to the locked position (red indicator). Set your own desired combination before closing the door and remember your reset code. (Fig K)



- Close the door and scramble the dials before leaving. Now your cabinet is locked.
- Always keep your secret combinations in a safe and accessible place for future reference.